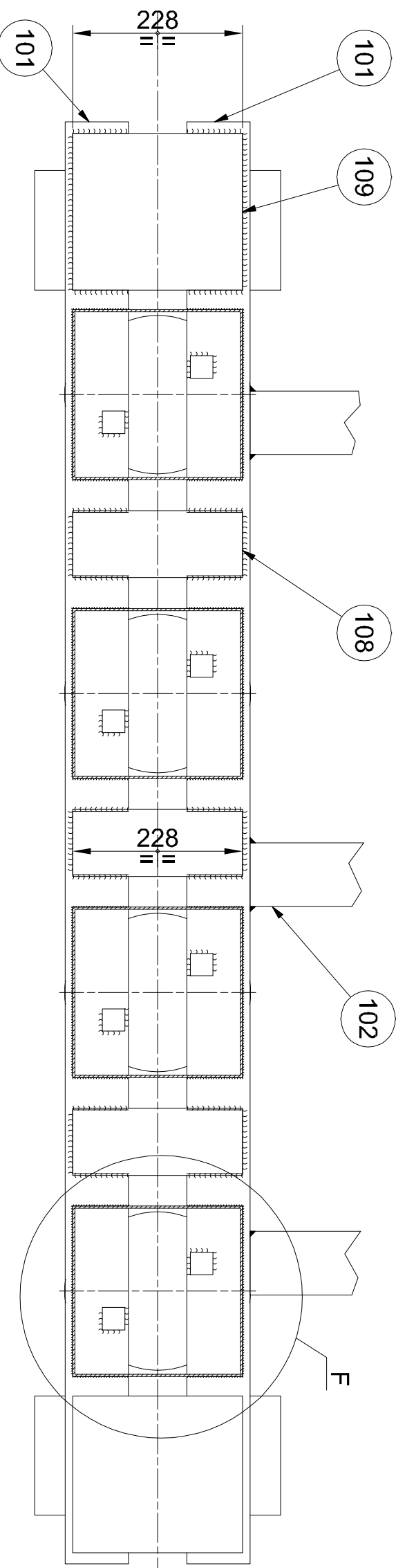

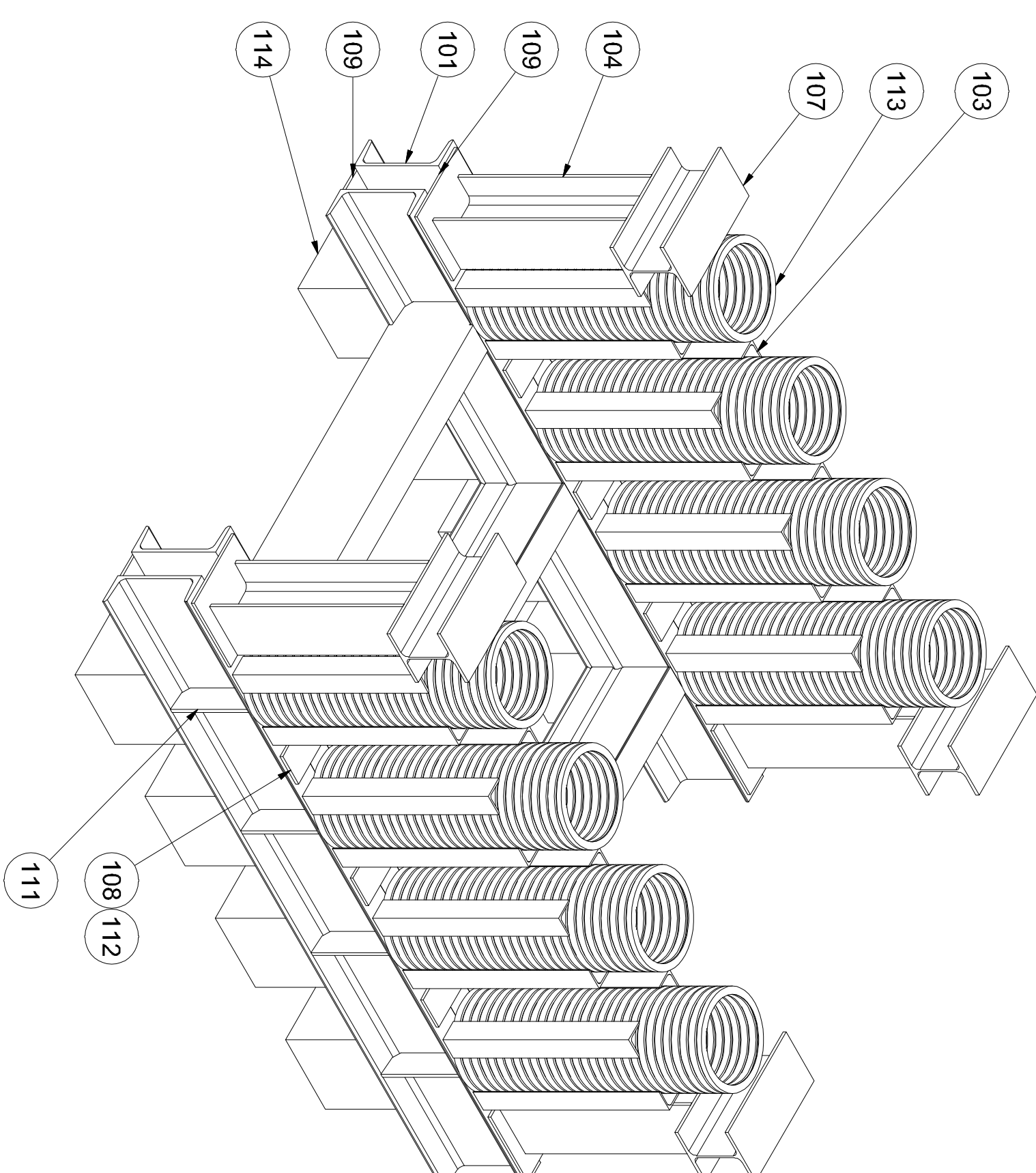
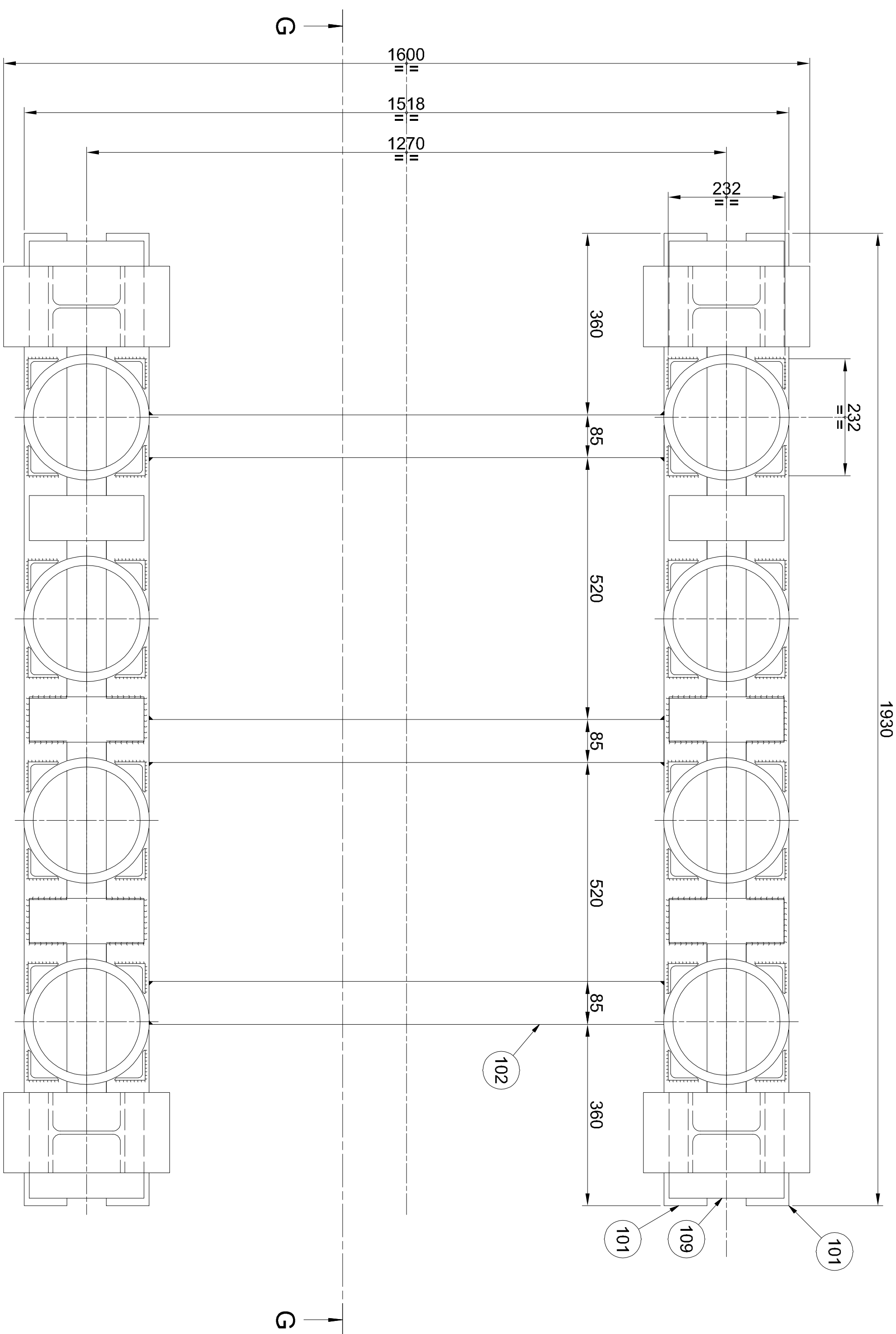
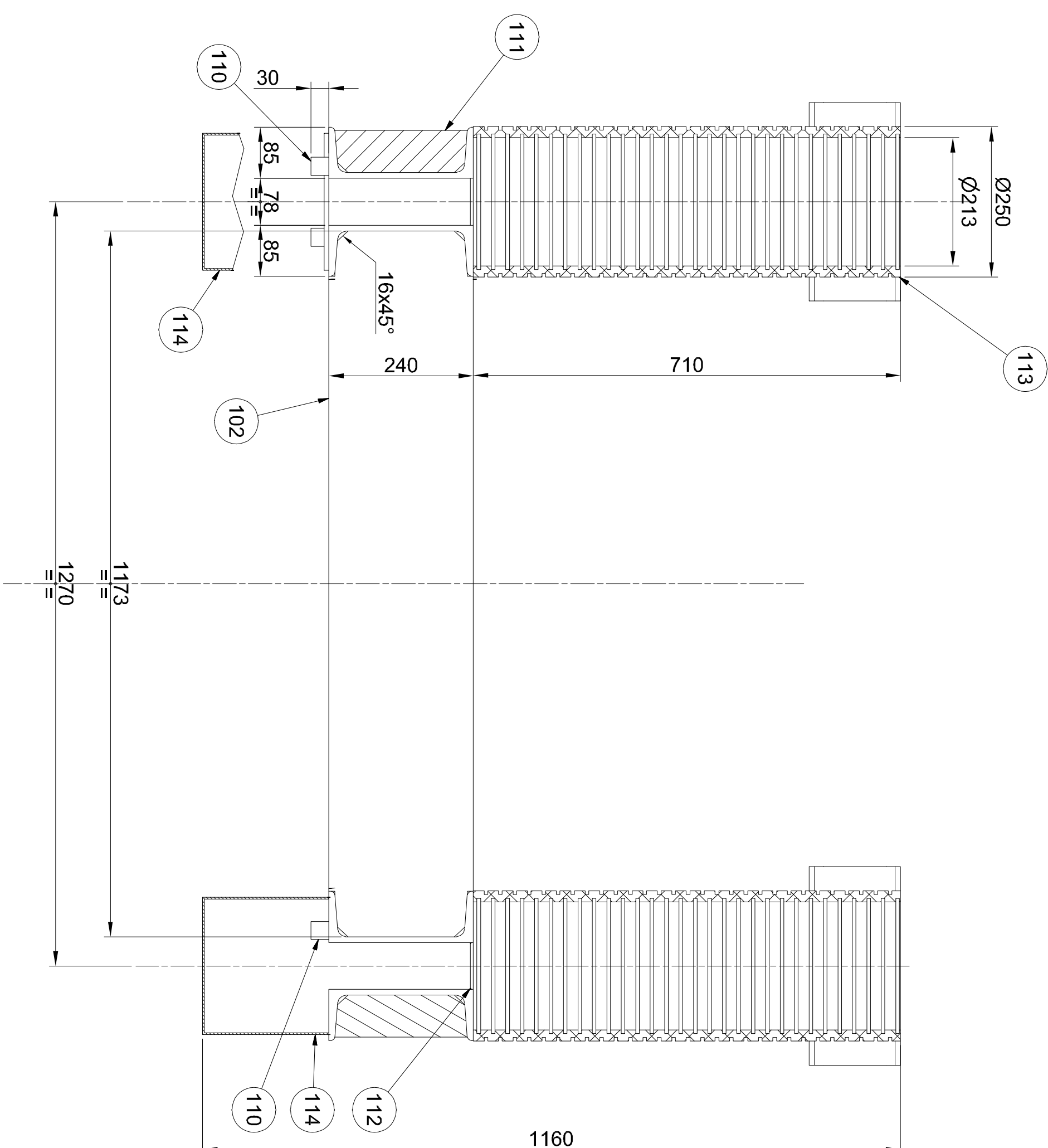
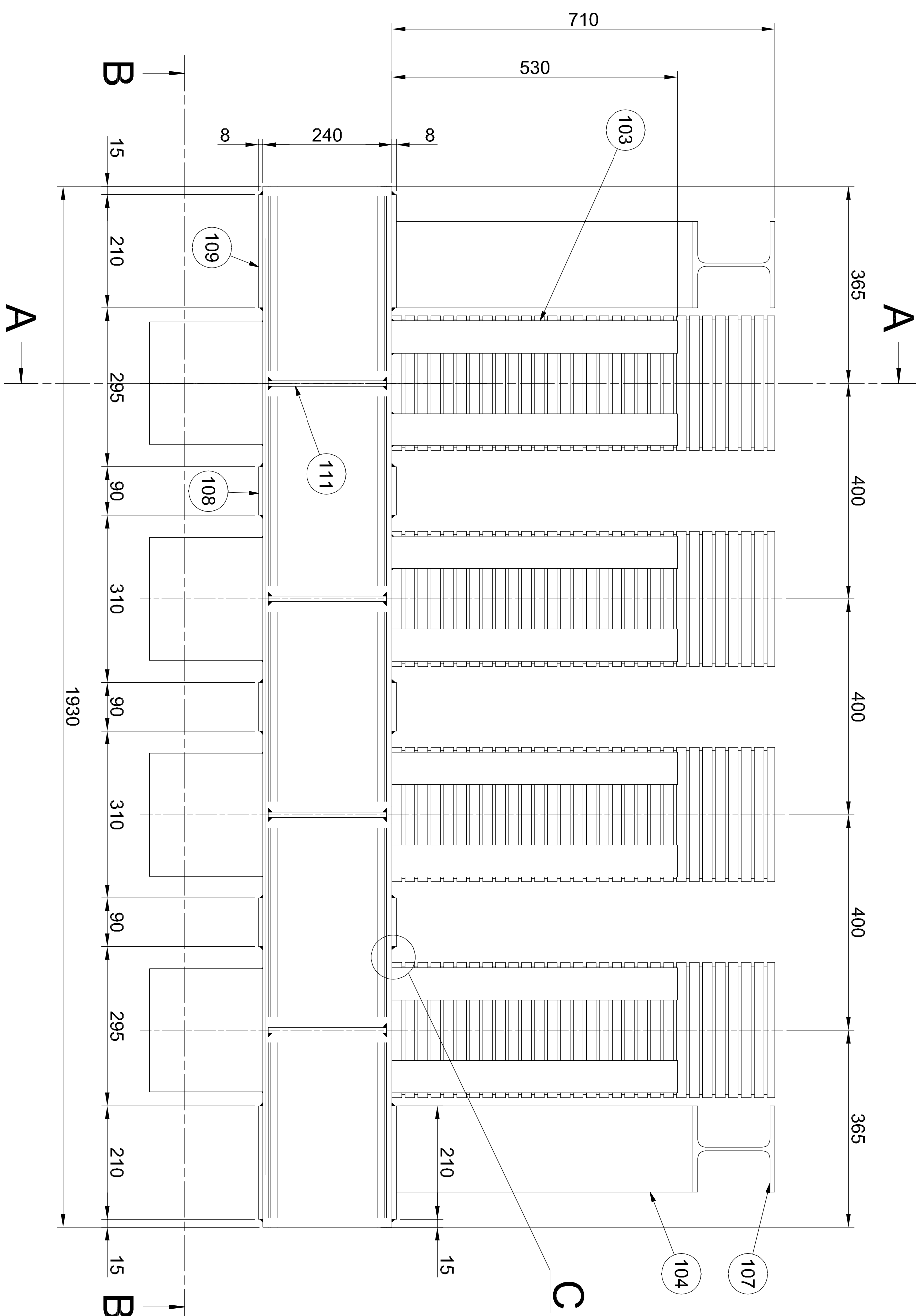
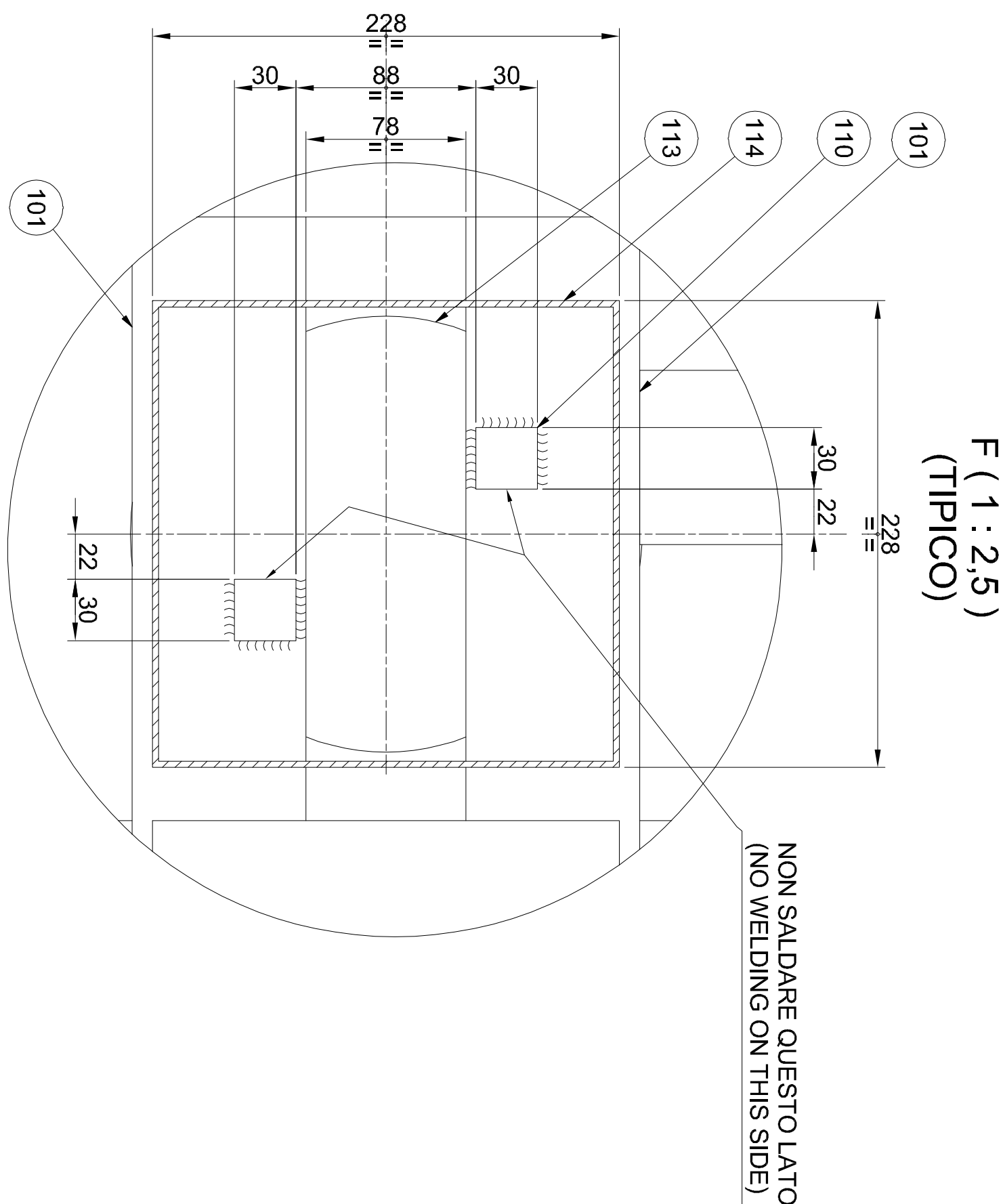


	16	15	14
GENERAL LACCHINING TOLERANCE - Ø DIAG. MEDIO (UN IN ISO 2798)			
TOLLERANZA GENERALE NELLA LAVORAZIONE - Ø GRADO MEDIO (UNI EN ISO 2798)			
Size above up to	Group o diametro	0 5 10 120 400 1000 2000 4000	R=0.5 R=0.5
Tolleranza	Sostanzamenti	+0.1 +0.2 +0.3 +0.5 +0.8 ±1.2 ±2 ±3	



B-B (1:7) 

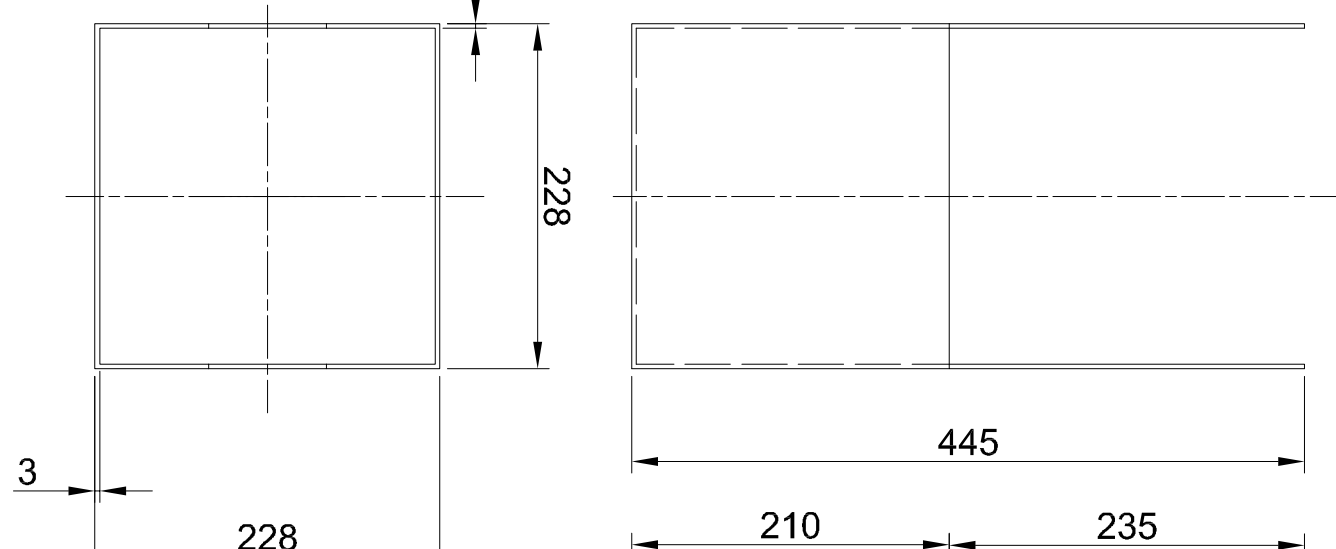
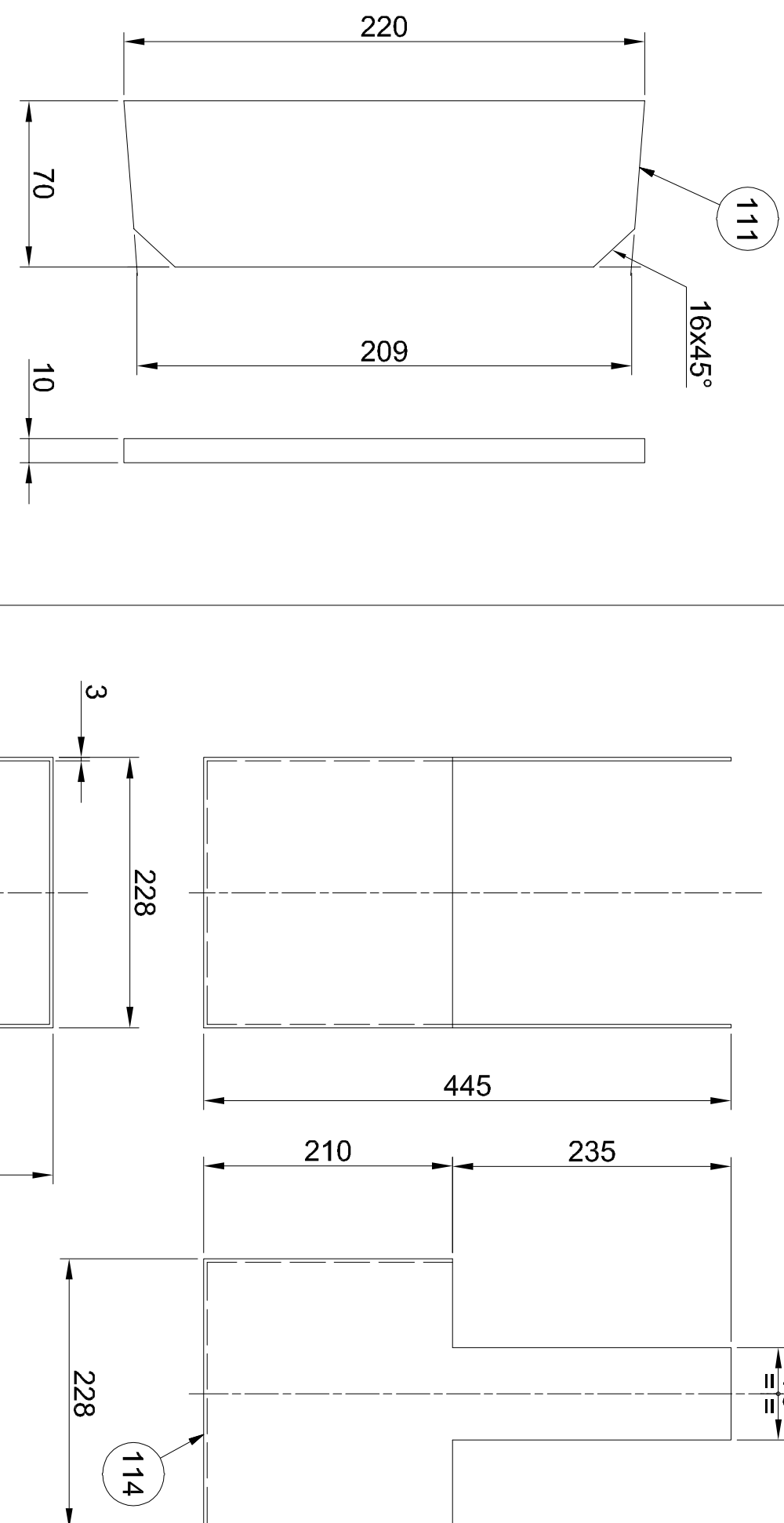
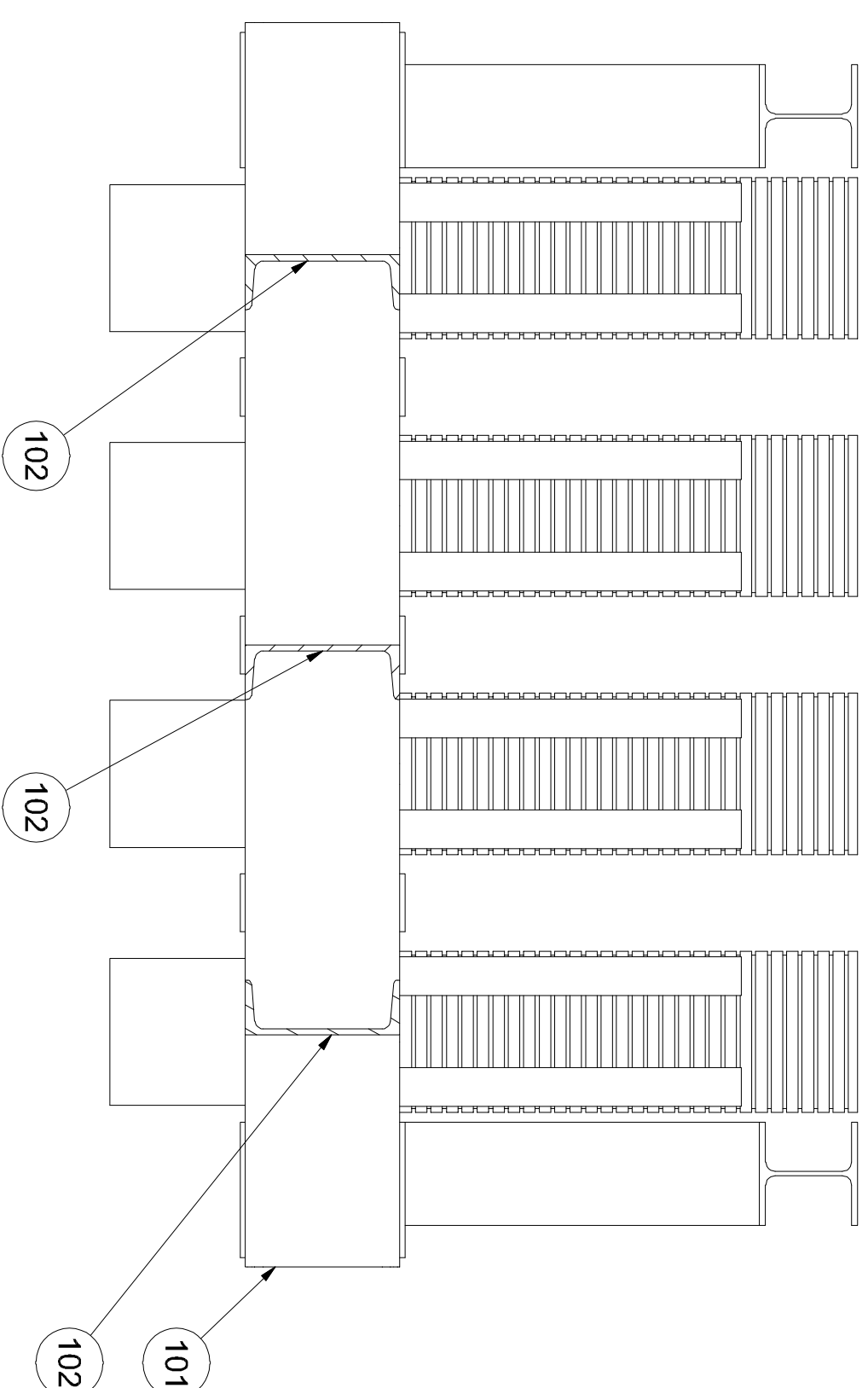
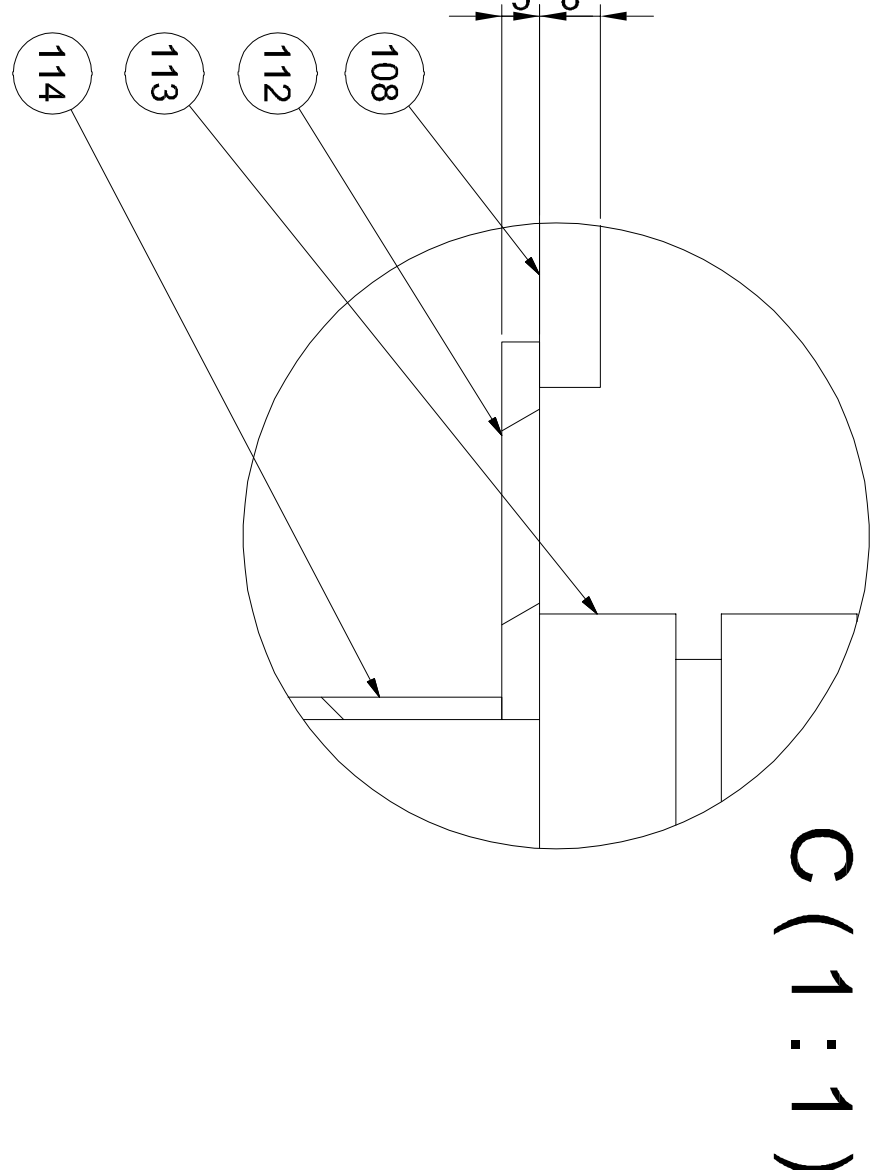
Attenzione: vista dal basso
(Attention: view from below)



CRONOLOGIA REVISIONI				
ZONA	REV.	DESCRIZIONE	DATA	APPR. DIS.
K-12	A	- Aggluminta tavola 2 - Agglomata nota Sez B-B - Added sheet 2	30/08/2023	R.V. A.B.
		- Note Section B-B updated		

[illegible]

**NB : ASSIEME A CARICO CLIENTE
ASSEMBLY IN CUSTOMER'S SCOPE
OF SUPPLY**



NORME GENERALI DI SALDATURA
GENERAL RULES FOR WELDED JOINTS

PREPARAZIONE DEI LEMBI SECONDO "DIN 1912"
EDGE PREPARATION FOR WELDING ACCORDING TO

DOVE NON ALTRIMENTI INDICATO: -A = 0,7
DELLO SPRESSORE MINIMO DA COLLEGARE
WHERE NOT SPECIFIED -A = 0.7
OF THE MINIMUM THICKNESS TO BE JOINT

